

A GUIDE TO PLATINUM

2018



*Lasting
Radiance*

S STULLER

Shop our vast assortment of diamonds
at [Stuller.com/Diamonds](https://www.stuller.com/Diamonds).



A. **86834** Diamond Starburst Earrings, 1/3 CTW, 12.2x10.7mm, Platinum, 32, \$1,825 per pair. Mounting **86834**, \$465 each. | B. **86837** Genuine Blue Sapphire, Blue Zircon, Aquamarine, and Diamond Necklace, 6x4mm center, 0.06 CTW, 13.9x8.3mm, Platinum, 67, 46, 26, 45, 32, 16", \$1,675. Mounting **86837**, \$609. | C. **86812** Genuine Blue Sapphire and Diamond Bar Necklace, 6x4mm, 1/10 CTW, 27.5x5.2mm, Platinum, 67, 32, 18", \$1,259. | D. **29860** 4-Prong Square Halo-Style Peg Setting, 1 CT center (5.5x5.5mm), 1/4 CTW, 7.3mm height, Platinum, 33, \$1,115. Mounting **29860**, \$349. E. **SH707** Diamond-Accented Shank for Peg Setting, 0.08 CTW, 2.3mm span, 2.5x3.8mm shoulder, Platinum, 33, \$1,125. Mounting **SH707**, \$899. | F. **123580** Round-Shape French-Set Halo-Style Semi-Set Engagement Ring, 1 CT center (6.5mm), 1/2 CTW, Platinum, 32, size 7, \$4,185. Mounting **123580**, \$1,515. | G. **123574** Diamond Circle Ring, 1/2 CTW, Platinum, 32, size 7, \$1,975. Mounting **123574**, \$1,119. H. **FIR10** Flat Comfort-Fit Band, 6mm width, Platinum, size 10, \$2,459.

Why Platinum?

Every great work of art has to start somewhere. And when you make your jewelry with platinum, you are giving yourself the best foundation possible. As the strongest and most durable precious metal, platinum will ensure the security of your stones. When you set in Stuller platinum, you can be sure that every piece you create will be a masterpiece. For more information, visit [Stuller.com/PlatinumBenefits](https://www.stuller.com/PlatinumBenefits).

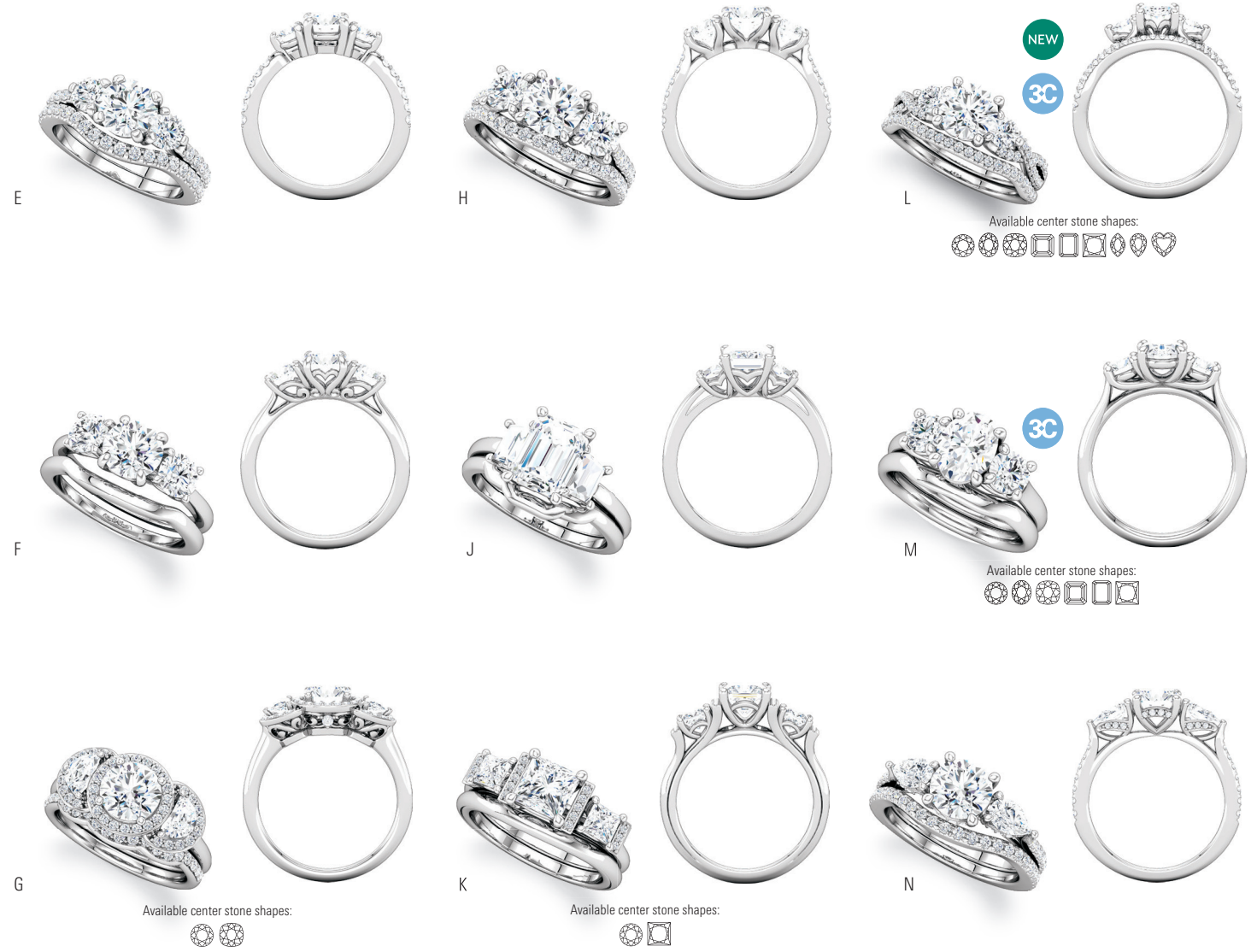
Stone Codes: 26 Genuine Marquise Diamond, SI2-SI3, G-I, Natural | 32 Genuine Diamond SI2-SI3, G-I, Natural
33 Genuine Diamond (Round), I1, G-H | 43 Genuine Amethyst, AA | 45 Genuine Aqua, AA
46 Genuine Blue Zircon, AA | 67 Genuine Blue Sapphire, AA

Shining Light

When love lasts forever, you need a ring that will too.



A. **123744** Matching Diamond Band, 1/2 CTW, Platinum, 32, size 7, \$1,899. Mounting **123744**, \$1,255. | B. **123721** Round-Shape Semi-Set Engagement Ring, 1 CT center (6.5mm), 1/4 CTW, Platinum, 32, size 7, \$2,409. Mounting **123721**, \$1,539. | C. **123721** Matching Diamond Band, 1/2 CTW, Platinum, 32, size 7, \$2,069. Mounting **123721**, \$1,449. | D. **51794** Domed Band with Infinity Front View, 6mm width, Platinum, size 10, \$3,575



E. 123260
Round-Shape Three-Stone Semi-Set Engagement Ring, 1 CT center (6.5mm), 1/2 CTW, Platinum, 32, size 7, \$4,175. Mounting **123260**, \$1,229. Shown with **LDIA-GEN:903057-G**, 1 CT, G, SI2.

123260
Matching Diamond Band, 1/2 CTW, Platinum, 32, size 7, \$1,485. Mounting **123260**, \$985.

F. 123689
Round-Shape Three-Stone Semi-Set Engagement Ring, 1 CT center (6.5mm), 1/4 CTW, Platinum, 32, size 7, \$6,525. Mounting **123689**, \$1,075. Shown with **LDIA-GEN:903058-G**, 1 CT, G, SI2.

123689
Matching Band, size 7, Platinum, \$635

G. 123479
Round-Shape Three-Stone Semi-Set Engagement Ring, 1 CT center (6.5mm), 1/2 CTW, Platinum, 242, 32, size 7, \$6,685. Mounting **123479**, \$1,625. Shown with **LDIA-GEN:903044-G**, 1 CT, G, SI1.

123479
Matching Diamond Band, 1/2 CTW, Platinum, 32, size 7, \$1,339. Mounting **123479**, \$799.

H. 123447
Round-Shape Three-Stone Semi-Set Engagement Ring, 1 CT center (6.5mm), 1 CTW, Platinum, 32, size 7, \$7,759. Mounting **123447**, \$1,115. Shown with **LDIA-GEN:903045-G**, 1 CT, H, SI1.

123447
Matching Diamond Band, 1/2 CTW, Platinum, 32, size 7, \$1,715. Mounting **123447**, \$885.

J. 123605
Emerald-Shape Three-Stone Semi-Set Engagement Ring, 1 1/4 CT center (8x6mm), 1/4 CTW, Platinum, 241, size 7, \$5,225. Mounting **123605**, \$1,035. Shown with **LDIA-GEN:900641-G**, 1 1/4 CT, H, SI1.

123605
Matching Band, size 7, Platinum, \$619.

K. 123516
Square-Shape Three-Stone Semi-Set Engagement Ring, 1 CT center (5.5x5.5mm), 1/2 CTW, Platinum, 35, 32, size 7, \$3,635. Mounting **123516**, \$1,499. Shown with **LDIA-GEN:901886-G**, 1 CT, G, SI1.

123516
Matching Band, size 7, Platinum, \$765.

L. 123699
Round-Shape Three-Stone Semi-Set Engagement Ring, 1 CT center (6.5mm), 1/2 CTW, Platinum, 32, size 7, \$2,755. Mounting **123699**, \$1,195. Shown with **LDIA-GEN:903056-G**, 1 CT, F, SI2.

123700
Matching Diamond Band, 1/2 CTW, Platinum, 32, size 7, \$1,249. Mounting **123700**, \$715.

M. 122105
Oval-Shape Three-Stone Semi-Set Engagement Ring, 1 CT center (8x6mm), 1/4 CTW, Platinum, 32, size 7, \$5,705. Mounting **122105**, \$1,335. Shown with **LDIA-GEN:901463-G**, 1 CT, I, SI2.

51226
Matching Band, size 7, Platinum, \$989.

N. 123480
Round-Shape Three-Stone Semi-Set Engagement Ring, 1 CT center (6.5mm), 1/2 CTW, Platinum, 117, 32, size 7, \$4,265. Mounting **123480**, \$1,185. Shown with **LDIA-GEN:903046-G**, 1 CT, I, SI1.

123480
Matching Diamond Band, 1/4 CTW, Platinum, 32, size 7, \$1,555. Mounting **123480**, \$935.

Stone Codes: 32 Genuine Diamond (Round) SI2-SI3, G-I, Natural | 35 Genuine Diamond (Square Princess) SI2-SI3, G-H, Natural | 117 Genuine Diamond (Pear) SI2-SI3, G-H | 241 Genuine Diamond (Trapezoid) SI1, G-H | 242 Genuine Diamond (Half Moon) SI1, G-I



A



D

Available center stone shapes:



G

Available center stone shapes:



K



N



R

Available center stone shapes:



B

Available center stone shapes:



E

Available center stone shapes:



H

Available center stone shapes:



L



P



S



C



F



J



M

Available center stone shapes:



Q

Available center stone shapes:



T

Available center stone shapes:

A. 123548
 Round-Shape Semi-Set Engagement Ring, 1 CT center (6.5mm), 0.04 CTW, Platinum, 32, size 7, \$1,015.
 Mounting **123548**, \$1,039. Shown with **LDIA-GEN-903005-G**, 1 CT, G, I1.
123548
 Matching Band, size 7, Platinum, \$599

B. 123018
 Emerald-Shape Solitaire Engagement Ring, 1 1/4 CT stone (8x6mm), Platinum, size 7, \$1,345.
 Shown with **LDIA-GEN-900651-G**, 1 1/4 CT, G, VS2.
51645
 Matching Band, size 7, Platinum, \$1,105

C. 123217
 Round-Shape Solitaire Engagement Ring, 1 CT stone (6.5mm), Platinum, size 7, \$1,255.
 Shown with **LDIA-GEN-903055-G**, 1 CT, E, SI2.
123217
 Matching Band, size 7, Platinum, \$809

D. 123713
 Oval-Shape Solitaire Engagement Ring, 1 CT stone (8x6mm), Platinum, size 7, \$1,265.
 Shown with **LDIA-GEN-901462-G**, 1 CT, G, SI2.
51858
 Matching Band, size 7, Platinum, \$1,065

E. 123650
 Cushion-Shape Semi-Set Engagement Ring, 2 CT stone (7x7mm), 0.03 CTW, Platinum, 32, size 7, \$1,429.
 Mounting **123650**, \$1,315. Shown with **LDIA-GEN-906511-G**, 2 CT, H, SI2.
51841
 Matching Band, size 7, Platinum, \$895

F. 123679
 Round-Shape Solitaire Engagement Ring, 1 CT stone (6.5mm), Platinum, size 7, \$1,479.
 Shown with **LDIA-GEN-903054-G**, 1 CT, D, SI2.
123679
 Matching Band, size 7, Platinum, \$1,045

G. 123054
 Round-Shape Solitaire Engagement Ring, 1 CT stone (6.5mm), Platinum, size 7, \$945. Shown with **LDIA-GEN-903006-G**, 1 CT, H, I1.
51635
 Matching Band, size 7, Platinum, \$575

H. 123639
 Oval-Shape Semi-Set Engagement Ring, 1 CT center (8x6mm), 0.025 CTW, Platinum, 32, size 7, \$1,489. Mounting **123639**, \$1,385.
 Shown with **LDIA-GEN-901454-G**, 1 CT, H, SI1.
51840
 Matching Band, size 7, Platinum, \$1,079

J. 123739
 Round-Shape Solitaire Engagement Ring, 1 CT stone (6.5mm), Platinum, size 7, \$1,079. Shown with **LDIA-GEN-903004-G**, 1 CT, F, I1.
123739
 Matching Band, size 7, Platinum, \$865

K. 123451
 Round-Shape French-Set Halo-Style Semi-Set Engagement Ring, 1 CT center (6.5mm), 1/4 CTW, Platinum, 32, size 7, \$3,455.
 Mounting **123451**, \$1,675. Shown with **LDIA-GEN-903057-G**, 1 CT, G, SI2.
123451
 Matching French-Set Diamond Band, 1/2 CTW, Platinum, 32, size 7, \$2,439. Mounting **123451**, \$1,279.

L. 123582
 Round-Shape French-Set Halo-Style Semi-Set Engagement Ring, 1 CT center (6.5mm), 3/8 CTW, Platinum, 32, size 7, \$2,315.
 Mounting **123582**, \$1,095. Shown with **LDIA-GEN-903058-G**, 1 CT, G, SI2.
123582
 Matching French-Set Diamond Band, 1/2 CTW, Platinum, 32, size 7, \$1,455. Mounting **123582**, \$745.

M. 123583
 Emerald-Shape Halo-Style Semi-Set Engagement Ring, 1 1/4 CT center (8x6mm), 1/2 CTW, Platinum, 21, 32, size 7, \$2,685.
 Mounting **123583**, \$1,435. Show with **LDIA-GEN-900641-G**, 1 1/4 CT, H, SI1.
123583
 Matching Diamond Band, 1/2 CTW, Platinum, 21, 32, size 7, \$1,759. Mounting **123583**, \$1,079.

N. 123449
 Round-Shape Halo-Style Semi-Set Engagement Ring, 1 CT center (6.5mm), 1/8 CTW, Platinum, 32, size 7, \$1,505.
 Mounting **123449**, \$1,279. Shown with **LDIA-GEN-903046-G**, 1 CT, I, SI1.
123449
 Matching Band, size 7, Platinum, \$749

P. 123481
 Round-Shape Halo-Style Semi-Set Engagement Ring, 1 CT center (6.5mm), 3/8 CTW, Platinum, 241, 32, size 7, \$6,989.
 Mounting **123481**, \$1,439. Shown with **LDIA-GEN-903045-G**, 1 CT, H, SI1.
123481
 Matching Diamond Band, 1/2 CTW, Platinum, 32, size 7, \$1,685. Mounting **123481**, \$975.

Q. 123725
 Oval-Shape Halo-Style Semi-Set Engagement Ring, 1 CT center (8x6mm), 1/3 CTW, Platinum 32, size 7, \$2,229.
 Mounting **123725**, \$1,135. Shown with **LDIA-GEN-901463-G**, 1 CT, H, SI2.
123725
 Matching Diamond Band, 1/2 CTW, Platinum, 32, size 7, \$1,569. Mounting **123725**, \$835.

R. 123227
 Round-Shape Halo-Style French-Set Semi-Set Engagement Ring, 1 CT center (6.5mm), 1/8 CTW, Platinum, 32, size 7, \$1,545. Mounting **123227**, \$885.
 Shown with **LDIA-GEN-903055-G**, 1 CT, E, SI2.
123227
 Matching French-Set Diamond Band, 1/2 CTW, Platinum, 32, size 7, \$1,149. Mounting **123227**, \$595.

S. 123580
 Round-Shape Halo-Style French-Set Semi-Set Engagement Ring, 1 CT center (6.5mm), 1/2 CTW, Platinum, 32, size 7, \$4,185. Mounting **123580**, \$1,515.
 Shown with **LDIA-GEN-903056-G**, 1 CT, F, SI2.
123580
 Matching Diamond Band, 1/4 CTW, Platinum, 32, size 7, \$2,035. Mounting **123580**, \$725.

T. 123337
 Pear-Shape Halo-Style Semi-Set Engagement Ring, 3/4 CT center (8x6mm), 1/2 CTW, Platinum, 32, size 7, \$1,769. Mounting **123337**, \$1,235.
 Show with **LDIA-GEN-902292-G**, 3/4 CT, G, SI1.
51748
 Matching Band, size 7, Platinum, \$945

Solid, Strong, and Secure

Because of platinum's legendary strength, diamonds and gemstones held in these settings can withstand the test of time.

A. **29913** Round-Shape Semi-Set 4-Prong Low Base Setting, 1 CT center (6.5mm), 0.03 CTW, 6.3mm height, Platinum, 33, \$469. Mounting **29913**, \$219. | B. **SH706** Diamond-Accented French-Set Shank for Peg Setting, ¼ CTW, 1.9x1.9mm shoulder, Platinum, 32, \$1,369. Mounting **SH706**, \$559. | C. **SH697** Diamond-Accented Twisted Shank for Peg Setting, ¼ CTW, 1.9x1.6mm shoulder, Platinum, 33, \$1,165. Mounting **SH697**, \$555. | D. Natural Diamond, Round, 1 CT. | E. Natural Diamond, Emerald, 1½ CT | F. **29896** Emerald-Shape Split-Claw Prong Basket Setting, 1¼ CT (7x5mm), 5.8mm height, Platinum, \$189 | G. **29874** Round-Shape Semi-Set Peg Setting, 1 CT center (6.5mm), ½ CTW, 7.9mm height, Platinum, 33, \$1,135. Mounting **29874**, \$425.

Crowning Glory

Even if your customer chooses a different metal for their ring, always suggest a platinum head, or crown, to protect the center stone. Many people are unaware of platinum's strength, so offer a platinum crown to them as an extra form of assurance.

Basket Settings NEW



29913
Round-Shape Semi-Set 4-Prong Low Base Setting, 1 CT center (6.5mm), 0.03 CTW, 6.3mm height, Platinum, 33, \$469. Mounting **29913**, \$219.



29904
Round-Shape Split-Claw Prong Basket Setting, 1 CT center (6.5mm), 5.5mm height, Platinum, \$155



29880
Round-Shape 6-Prong Fleur-de-Lis Low Base Setting, 1 CT (6.5mm), 6.5mm height, Platinum, \$185



29895
Oval-Shape Split Claw Prong Basket Setting, 1 CT (8x6mm), 6.8mm height, Platinum, \$239



29827
Round-Shape 4-Prong Basket Setting, 1 CT (6.5mm), 5.5mm height, Platinum, \$129



29896
Emerald-Shape Split-Claw Prong Basket Setting, 1 ¼ CT (7x5mm), 5.8mm height, Platinum, \$189

Peg Settings NEW



29840
Round-Shape Halo-Style Semi-Set Peg Setting, 1 CT center (6.5mm), ½ CTW, 8.3mm height, Platinum, 33, \$1,149. Mounting **29840**, \$439.



29874
Round-Shape Halo-Style Semi-Set Peg Setting, 1 CT center (6.5mm), ½ CTW, 7.9mm height, Platinum, 33, \$1,135. Mounting **29874**, \$425.



29861
Oval-Shape Halo-Style Semi-Set Peg Setting, 1 CT center (8x6mm), ½ CTW, 7.8mm height, Platinum, 33, \$1,259. Mounting **29861**, \$515.



29922
Round-Shape Cocktail-Style Peg Setting, 1 CT (6.5mm), 5.5mm height, Platinum, \$129



29862
Emerald-Shape Halo-Style Semi-Set Peg Setting, 1 ¼ CT center (7x5mm), ½ CTW, 7.4mm height, Platinum, 33, \$1,165. Mounting **29862**, \$399.



29884
Pear-Shape 6-Prong Claw Peg Setting, 1 CT (8.5x5.5mm), 6.5mm height, Platinum, \$169

Best-Selling Peg Settings



311
Round-Shape 4-Prong Low Peg Setting, ¾-1½ CT (6.0-6.6mm), 6.2mm height, Platinum, \$155



24975
Round-Shape 4-Prong Semi-Set Peg Setting, 1 CT center (6.5mm), 0.04 CTW, Platinum, 33, \$375. Mounting **24975**, \$225.



29311
Round-Shape Semi-Set Halo-Style Peg Setting, 1 CT center (6.5mm), 0.08 CTW, 8.1mm height, Platinum, 33, \$495. Mounting **29311**, \$269.



28251
Round-Shape Semi-Set Halo-Style Peg Setting, 1 CT center (6.5mm), ½ CTW, 7.5mm height, Platinum, 33, \$1,009. Mounting **28251**, \$399.



312
Round-Shape Tall 6-Prong Peg Setting, ¾-1½ CT (6.0-6.6mm), 6.2mm height, Platinum, \$159



28037
Square-Shape 4-Prong Semi-Set Peg Setting, 1 CT center (5.5x5.5mm), 0.05 CTW, 7.5mm height, Platinum, 33, \$415. Mounting **28037**, \$265.



29309
Round-Shape Halo-Style Semi-Set Peg Setting, 1 CT center (6.5mm), ¼ CTW, 8.1mm height, Platinum, 33, \$599. Mounting **29309**, \$315.



28248
Round-Shape Halo-Style Semi-Set Peg Setting, 1 CT center (6.5mm), ¼ CTW, 7.7mm height, Platinum, 33, \$1,145. Mounting **28248**, \$395.



346
Oval-Shape 6-Prong Peg Setting, 1 CT (8x6mm), 6.5mm height, Platinum, \$249



29643
Round-Shape Semi-Set Peg Setting, 1 CT center (6.5mm), 0.06 CTW, 6.8mm height, Platinum, 33, \$525. Mounting **29643**, \$199.



29314
Oval-Shape Halo-Style Semi-Set Peg Setting, 1 CT center (8x6mm), ¼ CTW, 7.9mm height, Platinum, 33, \$629. Mounting **29314**, \$315.



28256
Square-Shape Halo-Style Semi-Set Peg Setting, 1 CT center (5.5x5.5mm), ¼ CTW, 7.2mm height, Platinum, 33, \$1,195. Mounting **28256**, \$459.

Peg Shanks NEW



SH719
Diamond-Accented Sculptural Shank for Peg Setting, ¼ CTW, 3.6mm span, 2.5×4.8mm shoulder, Platinum, 33, \$1,375. Mounting **SH719**, \$795.



SH712
Diamond-Accented Shank for Peg Setting, 0.06 CTW, 4.9mm span, 1.9×3.4mm shoulder, Platinum, 33, \$965. Mounting **SH712**, \$839.



SH676
Diamond-Accented Shank for Peg Setting, ¼ CTW, 4mm span, 6.3×4.4mm shoulder, Platinum, 124, \$1,469. Mounting **SH676**, \$865.

Best-Selling Peg Shanks



SH475
Milgrain Cathedral Shank for Peg Setting, 4.6mm span, 1.4×5.1mm shoulder, Platinum, \$995



SH701
Shank for Peg Setting, 5.3mm span, 2.6×2.4mm shoulder, Platinum, \$865



SH657
Cathedral Shank for Peg Setting, 2.7mm span, 1.8×2.6mm shoulder, Platinum, \$785



SH714
Diamond-Accented Shank with Milgrain for Peg Setting, ¼ CTW, 3mm span, 2.5×3.8mm shoulder, Platinum, 33, \$1,339. Mounting **SH714**, \$759.



SH685
Diamond-Accented Shank for Peg Setting, ⅓ CTW, 3.8mm span, 1.9×1.6mm shoulder, Platinum, 21, 32, \$1,465. Mounting **SH685**, \$529.



SH670
Diamond-Accented Shank for Peg Setting, ¼ CTW, 2.6mm span, 1.9×2.1mm shoulder, Platinum, 124, \$1,179. Mounting **SH670**, \$495.



SH468
Diamond-Accented Shank for Peg Setting, ⅓ CTW, 4mm span, 1.8×3.3mm shoulder, Platinum, 545, \$979. Mounting **SH468**, \$535.



121963
Diamond-Accented Sculptural Shank for Peg Setting, ¼ CTW, 3.5mm span, 2.9×2.1mm shoulder, Platinum, 32, \$1,765. Mounting **121963**, \$1,255.



121957
Diamond-Accented Shank for Peg Setting, ⅓ CTW, 3.3mm span, 2.9×1.4mm shoulder, Platinum, 32, \$2,319. Mounting **121957**, \$1,295.



SH696
Sculptural Shank for Peg Setting, 5.9mm span, 2.2×2.1mm shoulder, Platinum, \$925



SH699
Decorative Shank for Peg Setting, 5.1mm span, 2.2×2.2mm shoulder, Platinum, \$609



SH698
Twisted Shank for Peg Setting, 2.2×1.9mm, Platinum, \$705



SH447
Diamond-Accented Shank for Peg Setting, ⅓ CTW, 1.6×1.7mm, Platinum, 33, \$999. Mounting **SH447**, \$485.



SH445
Diamond-Accented Shank for Peg Setting, ⅓ CTW, 6.5mm span, 1.7×2.7mm shoulder, Platinum, 509, \$1,325. Mounting **SH445**, \$665.



SH706
Diamond-Accented French-Set Shank for Peg Setting, ⅓ CTW, 1.9×1.9mm, Platinum, 32, \$1,369. Mounting **SH706**, \$559.



A Available center stone shapes:



E Available center stone shapes:



J Available center stone shapes:



N



S



W



B Available center stone shapes:



F Available center stone shapes:



K Available center stone shapes:



P



T



X



C Available center stone shapes:



G Available center stone shapes:



L Available center stone shapes:



Q



U



Y



D Available center stone shapes:



H Available center stone shapes:



M Available center stone shapes:



R



V



Z

A. 122107
 Diamond Eternity Band, 1 3/4 CTW, Platinum, 32, size 7, \$3,905. Mounting **122107**, \$779. Anniversary **122877**.

B. 123193
 Diamond Eternity Band, 1 1/2 CTW, Platinum, 32, size 7, \$4,685. Mounting **123193**, \$1,385.

C. 123655
 Diamond Anniversary Band, 1 1/4 CTW, Platinum, 32, size 7, \$3,719. Mounting **123655**, \$995.

D. 123602
 Diamond Anniversary Band, 3/4 CTW, Platinum, 32, size 7, \$2,615. Mounting **123602**, \$775. Eternity **123623**.

E. 122980
 Diamond Eternity Band, 2 1/3 CTW, Platinum, 35, size 7, \$7,519. Mounting **122980**, \$1,345. Anniversary **122878**.

F. 123601
 Diamond Eternity Band, 1 3/4 CTW, Platinum, 189, size 7, \$6,085. Mounting **123601**, \$769. Anniversary **123600**.

G. 122877
 Diamond Anniversary Band, 5/8 CTW, Platinum, 32, size 7, \$2,365. Mounting **122877**, \$859. Eternity **122107**.

H. 123600
 Diamond Anniversary Band, 3/4 CTW, Platinum, 32, size 7, \$2,889. Mounting **123600**, \$1,025. Eternity **123601**.

J. 123191
 Diamond Eternity Band, 1 1/2 CTW, Platinum, 32, size 7, \$4,215. Mounting **123191**, \$819. Anniversary **123180**.

K. 123623
 Diamond Eternity Band, 1 1/4 CTW, Platinum, 32, size 7, \$4,339. Mounting **123623**, \$675. Anniversary **123602**.

L. 123629
 Diamond Anniversary Band, 1/2 CTW, Platinum, 32, size 7, \$2,219. Mounting **123629**, \$755. Eternity **123628**.

M. 123675
 Diamond Anniversary Band, 3/4 CTW, Platinum, 32, size 7, \$2,655. Mounting **123675**, \$795. Eternity **123625**.

N. 123123
 French-Set Diamond Anniversary Band, 1/8 CTW, Platinum, 32, size 7, \$1,375. Mounting **123123**, \$849.

P. 123656
 Diamond Anniversary Band, 7/8 CTW, Platinum, 32, size 7, \$1,315. Mounting **123656**, \$995.

Q. 123608
 French-Set Diamond Anniversary Band, 1/2 CTW, Platinum, 23 32, size 7, \$2,005. Mounting **123608**, \$809.

R. 123393
 Diamond Eternity Band, 3/4 CTW, Platinum, 26, 32, size 7, \$3,279. Mounting **123393**, \$915.

S. 123225
 French-Set Diamond Eternity Band, 1/2 CTW, Platinum, 32, size 7, \$2,145. Mounting **123225**, \$595.

T. 123812
 Diamond Anniversary Band, 1/4 CTW, Platinum, 32, size 7, \$2,285. Mounting **123812**, \$1,395.

U. 123607
 Diamond Anniversary Band, 3/4 CTW, Platinum, 35, 32, size 7, \$2,855. Mounting **123607**, \$895.

V. 123294
 Diamond Anniversary Band, 1/3 CTW, Platinum, 26, 32, size 7, \$1,535. Mounting **123294**, \$655.

W. 123430
 French-Set Diamond Anniversary Band, 1/2 CTW, Platinum, 32, size 7, \$2,515. Mounting **123430**, \$839.

X. 123704
 Diamond Anniversary Band, 1/10 CTW, Platinum, 32, size 7, \$1,335. Mounting **123704**, \$805.

Y. 123585
 Diamond Anniversary Band, 1/2 CTW, Platinum, 21, 35, size 7, \$2,325. Mounting **123585**, \$925.

Z. 123392
 Diamond Anniversary Band, 3/8 CTW, Platinum, 26, 32, size 7, \$1,955. Mounting **123392**, \$775.

Enduring Love

Wedding bands that will last a lifetime



A. **51578** Domed Band with Wheat Front View, 6mm width, Platinum, size 10, \$2,905 | B. **51538** Flat-Edge Comfort-Fit Milgrain Band with Satin Finish, 6mm width, Platinum, size 10, \$2,299 | C. **51581** Sculptural Band with Milgrain, 4mm width, Platinum, size 10, \$1,709 | D. **51530** Flat Band with Hammer Finish, 6mm width, Platinum, size 10, \$1,975

IR
Comfort-Fit Band, Platinum

mm Width	2	3	4	6
Size 7	\$725	\$1,265	\$1,579	\$2,285
Size 10	\$795	\$1,419	\$1,775	\$2,625

HRE
Half-Round Edge Band, Platinum

mm Width	2	3	4	6
Size 7	\$525	\$769	\$1,005	\$1,659
Size 10	\$605	\$855	\$1,195	\$1,895

FIR
Flat Comfort-Fit Band, Platinum

mm Width	2	3	4	6
Size 7	\$835	\$1,175	\$1,515	\$2,285
Size 10	\$915	\$1,295	\$1,695	\$2,459

MG
Milgrain Band, Platinum

mm Width	2.5	3	4	6
Size 7	\$615	\$785	\$989	\$1,605
Size 10	\$709	\$795	\$1,105	\$1,805

Enchanting Elegance

Rare and pure platinum will inspire and delight.



A. **86843** Crescent Moon and Star Necklace, 13.1x9.6mm, Platinum, 16-18", \$759 | B. **86814** Genuine Amethyst and Diamond V Necklace, 6x4mm, 0.08 CTW, 19.8x8.3mm, Platinum, 42, 32, 16" \$1,209 Semi-Set \$1069, Mounting \$715. | C. **72018** Chatham® Created Blue Sapphire and Diamond Ring, 6x4mm center, 0.04 CTW, Platinum, 7, 32, size 7, \$1,379. Mounting **72018**, \$865 | D. **123703** Diamond Stackable Ring, 0.07 CTW, Platinum, 32, size 7, \$1,199. Mounting **123703**, \$989. | E. **123592** Diamond Stackable Ring, ¼ CTW, Platinum, 32, size 7, \$1,515. Mounting **123592**, \$959. | F. **86822** Geometric Earrings, 12x8.1mm, Platinum, \$465 per pair



86866
Diamond Starburst Circle Necklace, ⅝ CTW, 17mm, Platinum, 32, 16", \$2,615. Mounting **86866**, \$765.

123751
Diamond Starburst Circle Ring, ½ CTW, 13mm, Platinum, 23, 32, size 7, \$2,515. Mounting **123751**, \$1,379.



86835
Diamond Starburst Necklace, ⅓ CTW, 17.6mm, Platinum, 32, 16", \$1,955. Mounting **86835**, \$1,255.

86834
Diamond Starburst Earrings, ⅓ CTW, 10.7mm, Platinum, 32, \$1,825 per pair. Mounting **86834**, \$465. each.

123709
Diamond Starburst Ring, ⅓ CTW, 10.7mm, Platinum, 32, size 7, \$1,285. Mounting **123709**, \$1,075.



86770
Geometric Curved Bar Necklace Center, 24.3x6.3mm, Platinum, 16-18", \$1,029

86849
Geometric Hoop Earrings, 17.3x2.3mm, Platinum, \$1,505 per pair

51850
Geometric Stackable Ring, 4.5mm, Platinum, \$1,025



72045
Genuine Mexican Fire Opal, Mozambique Garnet and Citrine Ring, 14.1mm, Platinum, 186, 57, 48, size 7, \$1,255. Mounting **72045**, \$1,215.

86874
Genuine Mexican Fire Opal, Mozambique Garnet and Citrine Earrings, 9.9x7.8mm, Platinum, 186, 57, 48, \$949 per pair. Mounting **86874**, \$279 each.



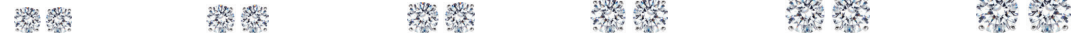
66233
3-Prong Diamond Cocktail-Style Stud Earrings, 32. Mounting **66233**.



CTW	1/5	1/4	1/3	1/2	3/4	1
mm Stone	3.0	3.2	3.4	4.0	4.5	5.0
Platinum \$	\$649 per pair	\$775 per pair	\$1,115 per pair	\$2,159 per pair	\$3,885 per pair	\$7,219 per pair



29762
4-Prong Diamond Cocktail-Style Stud Earrings, 32. Mounting **29762**.



CTW	1/5	1/4	1/3	1/2	3/4	1
mm Stone	3.0	3.2	3.4	4.0	4.5	5.0
Platinum \$	\$685 per pair	\$805 per pair	\$1,149 per pair	\$2,185 per pair	\$3,915 per pair	\$7,239 per pair



1874
4-Prong Diamond Basket-Style Stud Earrings, 32. Mounting **1874**.



CTW	1/4	1/2	3/4	1	1 1/2	2
mm Stone	3.2	4.0	4.5	5.0	5.75	6.3
Platinum \$	\$815 per pair	\$2,195 per pair	\$3,919 per pair	\$7,235 per pair	\$13,715 per pair	\$28,255 per pair



29236
6-Prong Diamond Basket-Style Stud Earrings, 32. Mounting **29236**.



CTW	1/4	1/2	3/4	1	1 1/2	2
mm Stone	3.2	4	4.5	5	5.75	6.3
Platinum \$	\$815 per pair	\$2,205 per pair	\$3,925 per pair	\$7,255 per pair	\$13,749 per pair	\$28,305 per pair



86846
Crescent Moon Earrings, 8.9x4.8mm, Platinum, \$379 per pair



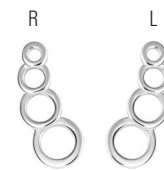
86842
Diamond Geometric Earrings, 1/5 CTW, 12.1x5.9mm, Platinum, 32, \$1,055 per pair. Mounting **86842**, \$345 each



86859
Diamond Bezel-Set Earrings, 1/3 CTW, 8.3x4.1mm, Platinum, 32, \$2,179 per pair. Mounting **86859**, \$285 each.



86844
Engravable Beaded Earrings, 12.9x10mm, Platinum, \$1,239 per pair. Shown with Lucida Handwritten font.



86675
Geometric Ear Climbers, 14.6x5.9mm, Platinum, \$515 per pair



86788
Diamond Geometric Ear Climbers, 0.07 CTW, 15x6.2mm, Platinum, 33, \$795 per pair. Mounting **86788**, \$365 each.



86825
Scattered Bead Ear Climbers, 11.5x5.9mm, Platinum, \$535 per pair



86852
White Freshwater Cultured Pearl and Diamond Ear Climbers, 5.0-5.5mm pearls, 1/6 CTW, 9.1x8.4mm, Platinum, 16, 32, \$1,665 per pair. Semi-Set **86852**, \$1,599 each. Mounting **86852**, \$719 each.



86815
Genuine Blue Sapphire J-Hoop Earrings, 15.5x6.8mm, Platinum, 67, \$1,795 per pair. Mounting **86815**, \$429 each.



86816
Diamond J-Hoop Earrings, 1/5 CTW, 9.8x6.5mm, Platinum, 32, \$1,809 per pair. Mounting **86816**, \$465 each.



86776
Diamond Bezel-Set J-Hoop Earrings, 0.06 CTW, 11.5x2.6mm, Platinum, 32, \$629 per pair. Mounting **86776**, \$295 each.



86792
Geometric Hoop Earrings, 12.6x1.7mm, Platinum, \$979 per pair

86830
Family Bar Earring Mounting for Round-Shape Stone, 10.2x2.5mm. Available with 1-4 stones. Sold by each.



mm Stone	1- 2.0	2- 2.0	3- 2.0	4- 2.0
Platinum \$	\$315	\$315	\$315	\$315



86814
Genuine Aquamarine and Diamond V Necklace,
6×4mm, 0.08 CTW, 19.8×8.3mm, Platinum,
45, 32, 18", \$1,219. Semi-Set **86814**, \$1,069. Mounting **86814**, \$715.



86787
Diamond V Necklace,
0.03 CT, 25.2×11.7mm, Platinum,
32, 18", \$945. Mounting **86787**, \$869.



86850
Sculptural V Necklace,
26×9mm, Platinum, 18", \$765



86742
Interlocking Circle Necklace,
20.1×14mm, Platinum, 16-18", \$915



86713
Diamond Curved Bar Necklace, 1/10 CTW,
25.1×9.5mm, Platinum, 32, 16-18", \$1,795.
Mounting **86713**, \$1,235.



86692
Diamond Crescent Moon Necklace, 1/3 CTW,
19.5×15mm, Platinum, 32, 16-18", \$2,319.
Mounting **86692**, \$749.



86855
Diamond Bezel-Set V Necklace,
1/6 CTW, 15.7×5.9mm, Platinum,
32, 18", \$1,095. Mounting **86855**, \$669



86766
Marquise-Shape Necklace,
16×9mm, Platinum, 16-18", \$1,095



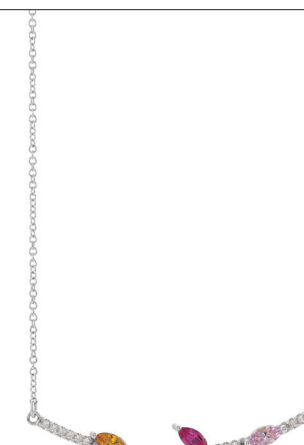
86820
Blue Sapphire, Blue Zircon, and Diamond Necklace,
0.07 CTW, 11.9×7.7mm, Platinum, 67, 46, 26, 18",
\$1,309. Mounting **86820**, \$675.



86875
Diamond Infinity Necklace, 1/6 CTW, 20.7×6.2mm,
Platinum, 32, 18", \$1,215. Mounting **86875**, \$775.



86824
Scattered Bead Necklace,
15.7×6.6mm, Platinum, 18", \$755



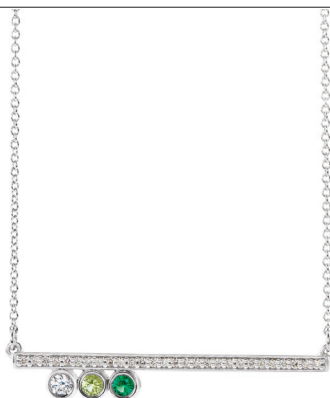
86829 Family Curved Bar Necklace Mounting
with Accents for Marquise-Shape Stones,
5×2.5mm center, 38.7×9.2mm, Platinum,
18", \$809. Semi-set \$1,195. Available with 1-5 stones.



86773
Diamond Bar Necklace, 1/6 CTW, 23.1×4.4mm,
Platinum, 33, 16-18", \$1,365. Mounting **86773**, \$895.



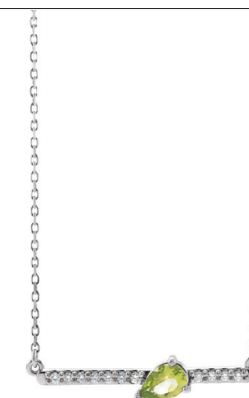
86838
Genuine Amethyst and Diamond Bar Necklace,
4×2mm, 1/6 CTW, 15.8×3.9mm, Platinum,
43, 32, 18", \$1,055. Mounting **86838**, \$769.



86778
Family Bar Necklace Mounting with Accents
for Round-Shape Stones, 2.5mm stones,
38.2×3.5mm, Platinum, 16-18", \$1,115.
Semi-set \$1,419. Available with 1-5 stones.



86703
Scroll Bar Necklace, 27.5×4.2mm,
Platinum, 16-18", \$935



86812
Genuine Peridot and Diamond Bar Necklace,
6×4mm, 1/10 CTW, 27.5×5.2mm, Platinum, 61, 32,
18", \$1,189. Semi-Set **86812**, \$1,145. Mounting **86812**, \$705.



86706
Genuine Pink Tourmaline and Diamond Bezel-Set
Bar Necklace, 2.25mm, 0.08 CTW, 20.5×3.4mm,
Platinum, 83, 32, 16-18", \$1,219.
Semi-Set **86706**, \$1,125. Mounting **86706**, \$905.



A. 123818
Diamond Crown Stackable Ring, 1/5 CTW, 6.0mm
Platinum, 32, size 7, \$1,749. Mounting **123818**, \$1,249.

B. 72022
Genuine Aquamarine Stackable Ring,
1- 2.25, 2- 2.0, 2- 1.8, 2- 1.5mm,
Platinum, 45, size 7, \$859. Mounting **72022**, \$819.

C. 51831
Scattered Bead Stackable Ring,
2.9mm, Platinum, size 7, \$655



D. 51816
Crown Stackable Ring, 5.5mm,
Platinum, size 7, \$819

E. 123520
Stackable Diamond Cluster Ring 1/5 CTW,
3.4mm, Platinum, size 7, \$969.
Mounting **123520** \$839.

F. 51807
Twisted Bead Stackable Ring,
2.6mm, Platinum, size 7, \$725



G. 123821
Diamond Crown Stackable Ring, 3/5 CTW,
7.3mm, Platinum, 26, 32, size 7, \$1,929.
Mounting **123821**, \$1,015.

H. 72046
Genuine Amethyst Stackable Ring,
3.4mm, Platinum, 43, size 7, \$1,305.
Mounting **72046**, \$1,115.

J. 51849
Stackable Ring, 3.5mm,
Platinum, size 7, \$665



123701
Diamond Stackable Ring,
1/6 CTW, Platinum, 32, size 7, \$1,349.
Mounting **123701**, \$835.



123750
Diamond Crown Ring,
0.03 CTW, Platinum, 32, size 7,
\$769. Mounting **123750**, \$679.



51859
Crown Stackable Ring,
5mm, Platinum, Size 7, \$649



51860
Vintage-Inspired Stackable Ring,
4.4mm, Platinum, size 7, \$999



123743
Diamond Two-Stone Bezel-Set Ring,
1/4 CTW, 9.8x3.7mm, Platinum, 117, 32,
size 7, \$1,965. Mounting **123743**, \$989.



72038
Family Ring Mounting with Accents for
Round-Shape Stones, 2.5mm stones,
0.04 CTW, Platinum, \$1,189.
Semi-Set **72038** \$1,275.



123822
Diamond Three-Stone Bypass Ring,
1/5 CTW, Platinum, 32, size 7,
\$1,435. Mounting **123822**, \$975.



72027 Family Ring Mounting with
Accents for Marquise-Shape Stones,
5x2.5mm stones, 1/5 CTW, Platinum,
\$1,169. Semi-Set **72027** \$1,615.



K. 51848
Crown Stackable Ring,
3mm, Platinum, size 7, \$919

L. 123547
Diamond Stackable Ring, 1/4 CTW,
Platinum, 32, size 7, \$1,065. Mounting **123547**, \$869.

M. 71991
Genuine Pink Tourmaline Stackable Ring,
5- 2.5mm, Platinum, 83, size 7, \$975.
Mounting **71991**, \$905.



N. 72035
Genuine Blue Sapphire and Diamond
Stackable Ring, 3.0mm center, 0.04 CTW,
Platinum, 67, 32, size 7, \$1,175.
Semi-Set **72035**, \$1,009. Mounting **72035**, \$999.

P. 51833
Pyramid Stackable Ring,
3.5mm, Platinum, size 7, \$669

Q. 123703
Diamond Stackable Ring, 0.07 CTW,
Platinum, 32, size 7, \$1,199. Mounting **123703**, \$989.



R. 51855
Geometric Stackable Ring,
5.2mm, Platinum, size 7, \$745

S. 123714
Diamond Stackable Ring, 1/5 CTW,
Platinum, 21, 23, size 7, \$1,025.

T. 72047
Genuine Blue Zircon Stackable Ring,
5- 3.0mm, Platinum, 46, size 7, \$1,405.
Mounting **72047**, \$1,095.



51883
Interlocking Negative Space
Ring, 9.6mm, Platinum,
size 7, \$1,309



123779
Diamond Infinity Ring,
1/5 CTW, Platinum, 32, size 7,
\$1,425. Mounting **123779**, \$1,125.



51813
Criss-Cross Ring, 6.4mm,
Platinum, size 7, \$1,179



123711
Diamond Criss-Cross Ring,
1/5 CTW, Platinum, 32, size 7, \$2,199.
Mounting **123711**, \$1,749.



6519
White Freshwater Cultured Pearl
Negative Space Ring, 6.5mm pearl,
Platinum, 16, size 7, \$1,655.
Mounting **6519**, \$1,599.



51796
Freeform Ring,
6mm, Platinum, size 7, \$1,075



123690
Diamond Criss-Cross Ring,
1/5 CTW, Platinum, 32, size 7,
\$2,395. Mounting **123690**, \$1,609.



123732
Diamond Criss-Cross Ring,
1/4 CT, Platinum, size 7, \$4,095.
Mounting **123732**, \$2,425.

S STULLER

P
t
PLATINUM

Back cover, left to right:

86732 Vintage-Inspired J-Hoop Earring, 14.5×7.2mm, Platinum, \$595 per pair | **123776** Diamond Anniversary Band, ½ CTW, Platinum, 32, size 7, \$2,239. Mounting **123776**, \$945. | **72020** Chatham® Created Blue Sapphire and Diamond Ring, ½ CTW, Platinum, 7, 32, size 7 \$2,765. Mounting **72020** \$1,285. | **123714** Diamond Stackable Ring, ½ CTW, Platinum, 21, 23, size 7, \$1,025. Mounting **123714**, \$599.

Front cover, clockwise from top:

86831 Freeform Bar Necklace, 28.5×8mm, Platinum, 18", \$695
86798 Diamond Halo-Style Pendant, 6.65×4.75mm center (⅝ CT), ½ CTW, 11×9mm, Platinum, 33, \$3,955. Mounting **86798**, \$615. Shown with **CH123**. **123741** Emerald-Shape Semi-Set Engagement Ring, ¾ CT center (7×5mm), ¾ CTW, Platinum, 21, size 7, \$4,919. Mounting **123741**, \$1,095. | **51212** Comfort-Fit Beveled Edge Band with Satin Finish, 6mm width, Platinum, \$3,205 | **86813** Cluster Earring Jackets, ¼ CTW, Platinum, 26, \$1,335 per pair. Mounting **86813**, \$255 each.

Stone codes: 7 Chatham® Created Sapphire, Fine, SYN | 21 Genuine Straight Baguette Diamond, SI2-SI3, G-I
23 Genuine Tapered Baguette Diamond, SI2-SI3, G-I | 26 Genuine Marquise Diamond, SI2-SI3, G-I
32 Genuine Round Diamond, SI2-SI3, G-H | 33 Genuine Round Diamond, SI2-SI3, G-H



Stuller.com | 800 877 7777

All prices are suggested retail based on \$1,000 platinum and are subject to change without notice.
Visit Stuller.com for complete product selections, current pricing, and availability. Items are shown larger than actual size.